

CHENGALPATTU MEDICAL COLLEGE



TECTRONZ '21  
*Quatro of Elettronos*

*Proudly Presents*

# Chemsports



OUR SOCIAL MEDIA PARTNER

JUNE 12-15

REGISTER SOON !!





LET YOUR ZEALOUS EFFORTS SPEAK  
FOR ITSELF STAND TALL IN THE PLACE  
YOU OWN. HERE WE DONT WAIT FOR  
AN OPPORTUNITY , WE CREATE IT. LEAP  
AT THIS OPPORTUNITY....

LET YOUR ATHLETIC MIND SPIRIT UP  
.FOR WE ARE HERE UNFOLD YOUR  
HIDDEN TALENT WITH CHEMSPORTS  
2K25

LET EACH DROP OF UR SWEAT SPEAK  
FOR ITSELF, AND RECTITUDE REACH ITS  
ZENITH. NEVER SAY NEVER BECAUSE  
LIMITS ARE OFTEN JUST ILLUSIONS.  
HERE WE DONT TELL .WE SHOW THEM



# EVENTS

## MAJOR

CRICKET (M).

FOOTBALL (M).

VOLLEYBALL (M/W).

BASKETBALL (M/W).

THROWBALL (W).

## MINOR

FUTSAL(M/W).

VOLLEYBALL 3'S (M).

BASKETBALL 3'S (M).

TABLE TENNIS (M/W).

CARROM ( M/W).

CHESS ( M/W).

TRACK AND FIELD( M/W).

BADMINTON(M/W).

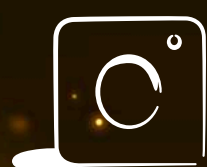
CLICK HERE TO  
REGISTER !!



# REGISTRATION RULES



- REGISTRATION IS MANDATORY TO PARTICIPATE IN ANY OF EVENTS
- REGISTRATION IS DONE AT BOTH ONLINE /OFFLINE
- ORIGINAL COLLEGE ID CARD ( BOTH HARDCOPY & SOFT COPY ) IS  
MUST  
COLLEGE ID CARD MUST BE SUBMITTED AT THE TIME OF  
REGISTRATION
- ID CARD IS MANDATORY FOR ENTRY INTO THE COURT
- REGISTERED INDIVIDUAL MUST CARRY THE PROOF OF TRANSACTION
- BOTH UNDER GRADUATES AND POST GRADUATES(SPECIFIED EVENTS  
) ARE ALLOWED TO PARTICIPATE IN THE EVENTS
- PLAYERS SHOULD BE ON TIME WITH THEIR RESPECTIVE SPORT  
EVENT
- ACCOMMODATIONS WILL BE PROVIDED FOR THOSE WHO HAD  
ALREADY REGISTERED FOR IT





- ALL TEAMS MUST REPORT TO THE VENUE 30MINUTES PRIOR TO THE SCHEDULED TIME.
- IT IS THE DUTY OF THE PARTICIPANT IF PARTICIPATING IN MULTIPLE EVENTS TO INFORM THE EVENT INCHARGES IN ADVANCE TO AVOID ANY CLASH OF FIXTURES.
- MORE THAN ONE MATCH CAN BE SCHEDULE FOR A TEAM ON A PARTICULAR DAY.
- FIXTURES CAN BE CHANGED AT ANY TIME AND ALL THE DECISIONS WILL BE CONVEYED TO THE RESPECTIVE TEAMS AS SOON AS POSSIBLE.
- ORGANIZERS COMMITTEE DECISION WILL BE FINAL REGARDING THE FIXTURES... NO FURTHER ARGUMENTS WILL BE ENCOURAGED REGARDING THE FIXTURES.
- ANY CHANGE IN VENUE OR TIMINGS OR FORMAT OF THE GAME, IN CASE OF UNFORESEEN CIRCUMSTANCES, WILL BE NOTIFIED TO THE CAPTAIN OF THE TEAMS IN ADVANCE
- IN CASE OF ANY DIFFERENCE OF OPINION DURING THE EVENT , THE REFEREE AND THE ORGANIZING COMMITTEE'S DECISION WILL BE FINAL





A group of people, mostly women, are seen from behind with their arms raised in a celebratory gesture. They are in a dark room filled with numerous small, glowing golden bokeh lights. The text 'Major events' is overlaid in a white, handwritten-style font.

# Major events





# CRICKET MEN'S

## KNOCKOUT

REGISTRATION

FEES-3000.Rs

(Ball fee collected at  
the end of match )

## INCHARGES

THOUFIQ-6369808939

SRI PRIYAN -9080477973

VISHAL KUMAR-6382104530

## VENUE

CHENGALPATTU MEDICAL  
COLLEGE CRICKET  
GROUND, CHENGALPATTU

[CLICK HERE TO REGISTER](#)



# RULES

- TOTALLY ONE TEAM PER COLLEGE IS ALLOWED
- EACH TEAM CAN HAVE A MAXIMUM OF 16 PLAYERS
- NUMBER OF OVERS WILL BE DISCLOSED LATER
- ALL STANDARD ICC RULES APPLY
- UMPIRES AND ORGANISERS DECISION WILL BE FINAL
- IF THE TEAM SHOWS UP LATER FOR THE MATCH THEY WILL BE DISQUALIFIED
- REGISTRATION FEE ONCE PAID WILL NOT BE RETURNED





# FOOTBALL MEN'S

## KNOCKOUT

REGISTRATION FEES

-3000 RS

## INCHARGES

MANIBHARATHI-8124302252

YOGESH-6383781491

VIGNESH-8610940672

## VENUE

RAJESWARI

VEDACHALAM

GOVERNMENT ARTS

COLLEGE GROUND,

CHENGALPATTU

[CLICK HERE TO REGISTER](#)



# RULES

- ONLY ONE TEAM PER COLLEGE IS ALLOWED
- EACH TEAM SHOULD CONTAIN MINIMUM OF 11 PLAYERS WITH MAXIMUM OF 5 SUBSTITUTES
- DURATION: 20-5-20 MINUTES ,  
PROPER FOOTWEAR IS COMPULSORY
- IN CASE BOTH TEAMS END UP WITH SCORING  
THE SAME NO OF GOALS, THE WINNER WILL BE  
DECIDED BY A PENALTY SHOOTOUT
- STANDARD FIFA RULES APPLIED
- THE DECISION OF REFEREE WILL BE FINAL





# VOLLEYBALL MEN'S

## KNOCKOUT

REGISTRATION  
FEES-1500 RS

## INCHARGES

DINESH-9363362261

CHITTETI PURUSHOTHAM-  
7305726514

## VENUE

MOONSHINE  
VOLLEY COURT,  
CHENGALPATTU

[CLICK HERE TO REGISTER](#)



# RULES

- TOTAL OF 12 PLAYERS ALLOWED IN A SQUAD
- PLAYING 6 & SUB 6
- BALLS WILL NOT BE GIVEN FOR WARMUP SHOTS
- EACH MATCH WILL HAVE 3 SETS OF 25 POINTS EACH
- THERE WILL BE ROTATION AFTER EACH SERVE
- TIMEOUT : 2 TIMEOUT PER SET, FOR EACH TEAM
- TIMEOUT OF 30 SECONDS
- GENERAL RULES AND REGULATIONS OF VOLLEYBALL WILL BE FOLLOWED
- REFEREE'S DECISION WILL BE FINAL
- ONE PG PER TEAM IN ALLOWED





# VOLLEYBALL WOMEN'S

## KNOCKOUT

REGISTRATION  
FEES-1200 RS

## INCHARGES

HARITHA-7603822538

SMANTHA -7550234264

DHANUJA -7358556500

## VENUE

MOONSHINE  
VOLLEY COURT  
CHENGALPATTU

[CLICK HERE TO REGISTER](#)



# RULES

- TOTAL OF 12 PLAYERS ALLOWED IN A SQUAD
- PLAYING 6 & SUB 6
- BALLS WILL NOT BE GIVEN FOR WARMUP SHOTS
- EACH MATCH WILL HAVE 3 SETS OF 25 EACH
- ROTATION IS COMPULSORY
- TIMEOUT : 2 TIMEOUT PER SET, FOR EACH TEAM
- TIMEOUT OF 30 SECONDS
- GENERAL RULES AND REGULATIONS OF VOLLEYBALL WILL BE FOLLOWED
- REFEREE'S DECISION WILL BE FINAL





# BASKETBALL MEN'S

## KNOCKOUT

REGISTRATION FEES

-2000.RS

## INCHARGES

BARATH-8122478238

CHERAN-9489223711

## VENUE

CHENGALPATTU MEDICAL  
COLLEGE COURT,  
CHENGALPATTU

[CLICK HERE TO REGISTER](#)



# RULES

- TOTALLY 1 TEAM PER COLLEGE IS ALLOWED
- EACH TEAM CAN HAVE MAXIMUM OF 12 PLAYERS
- EACH GAME CONSISTS OF 4 QUARTERS
- EACH QUARTER 10 MINUTES
- TIMEOUT: 4 TIMEOUTS FOR EACH TEAM
- STANDARD FIBA RULES WILL BE FOLLOWED
- THE DECISION OF REFEREE IS FINAL
- ONE PG PER TEAM IS ALLOWED





# BASKETBALL WOMEN'S

## KNOCKOUT

REGISTRATION FEES - 2000RS

## INCHARGES

CHARULATHA - 8122301387

ABIRAMI -90083 94354

AYESHA-7904451677

## VENUE

CHENGALPATTU MEDICAL  
COLLEGE COURT,  
CHENGALPATTU

[CLICK HERE TO REGISTER](#)



# RULES

- TOTALLY ONE TEAM PER COLLEGE IS ALLOWED
- EACH TEAM CAN HAVE MAXIMUM OF 12 PLAYERS
- EACH GAME CONSIST OF 4 QUARTER
- TIMING: EACH QUARTER 10 MINUTES
- TIMEOUT: 4 TIMEOUT OF EACH QUARTER
- STANDARD FIBA RULES WILL BE FOLLOWED
- THE DECISION OF REFEREE WILL BE FINAL





# THROWBALL WOMEN'S

## KNOCKOUT/LEAGUE

REGISTRATION FEE -  
1500 .RS

## INCHARGES

MOGHANAPRIYA-9445369831

NIKITHA-6385188098

## VENUE

CHENGALPATTU MEDICAL  
COLLEGE COURT,  
CHENGALPATTU

[CLICK HERE TO REGISTER.](#)



# RULES

- 2 TEAM PER COLLEGE IS ALLOWED
- EACH TEAM SHOULD CONSIST 9 PLAYERS PLUS MAXIMUM OF 3 SUBSTITUTES
- SERVICE OR RALLY POINTS ARE CONSIDERED FOR THE SCORE WHICH WILL BE DECIDED BY REGISTRATION COMMITTEE
- EACH MATCH CONSISTS OF 3 SET OF 25 POINTS EACH
- REFEREE DECISION IS CONSIDERED FINAL
- STANDARD RULES APPLY
- THERE SHALL BE ROTATION AFTER EACH SERVER
- FORMAT : KNOCKOUT / LEAGUE ( DEPENDING ON THE NUMBER OF REGISTRATION.



A group of people, including a man in a yellow jacket and a woman in a white jacket, are celebrating at night. They are surrounded by falling confetti and warm, glowing lights. The text "Minor events" is overlaid in a white, cursive font.

# Minor events





# FUTSAL MEN'S

## KNOCKOUT

REGISTRATION FEES - 800.RS

## INCHARGES

PRADEEP-8807412377

JOSHUA-9176059489

ARSHATH-7448503579

## VENUE

CHENGALPATTU MEDICAL  
COLLEGE FUTSAL GROUND,  
CHENGALPATTU

[CLICK HERE TO REGISTER](#)



# RULES

- THREE TEAM PER COLLEGE IS ALLOWED
- EACH TEAM CAN HAVE MINIMUM 5 PLAYERS WITH MAXIMUM 3 SUBSTITUTES
- TIMING : 8 -2 -8
- IN THE EVENT OF SCORING BEING LEVEL AFTER NORMAL TIME , THE WINNER WILL BE DECIDED BY A PENALTY SHOOTOUT
- GENERAL RULES AND REGULATIONS OF FUTSAL WILL BE FOLLOWED .
- THE DECISIONS OF THE REFEREE IS FINAL





# FUTSAL WOMEN

## KNOCKOUT

REGISTRATION FEES - 800 .RS

## INCHARGES

AISWARYA -7200162169

KUSHMA -93457 13449

DHANUSHRI -9345840039

## VENUE

CHENGALPATTU MEDICAL  
COLLEGE FUTSAL GROUND,  
CHENGALPATTU

[CLICK HERE TO REGISTER](#)



# RULES

- TYPE OF TOURNAMENT ( KNOCKOUT OR LEAGUE ) WILL BE DECIDED BASED ON THE NUMBER OF ENTRIES
- 3 TEAM PER COLLEGE IS ALLOWED.
- EACH TEAM CAN HAVE MINIMUM 5 PLAYERS WITH MAXIMUM 3 SUBSTITUTES .
- TIMING : 8-2-8
- IN THE EVENT IF SCORING BEING LEVEL AFTER NORMAL TIME .THE WINNER WILL BE DECIDED BY A PENALTY SHOOTOUT
- GENERAL RULES AND REGULATIONS OF FUTSAL WILL BE FOLLOWED
- THE DECISION OF REFEREE IS FINAL





# VOLLEYBALL 3'S MEN'S

**KNOCKOUT**

REGISTRATION FEES - 400 .RS

**INCHARGES**

DINESH-9363362261

CHITTETI PURUSHOTHAM-  
7305726514

**VENUE**

MONNSHINE VOLLEY COURT  
CHENGALPATTU

**CLICK HERE TO REGISTER**



# RULES

- TOTAL OF 6 PLAYERS ALLOWED IN A SQUAD
- PLAYING 3 & SUB 3
- BALLS WILL NOT BE GIVEN FOR WARM UP SHORT
- EACH MATCH WILL HAVE 1 SETS OF 30 POINTS
- TIMEOUT : 2 TIMEOUTS PER SET WITH ONE FOR EACH TEAM
- TIMEOUT FOR 30 SECONDS
- GENERAL RULES AND REGULATIONS OF VOLLEYBALL WILL BE FOLLOWED





# BASKETBALL 3'S MEN'S

**KNOCKOUT**

REGISTRATION FEES - 400 .RS

**INCHARGES**

BARATH-8122478238

CHERAN-9489223711

**VENUE**

CHENGALPATTU MEDICAL  
COLLEGE COURT,  
CHENGALPATTU

**[CLICK HERE TO REGISTER](#)**



# RULES

- ONE TEAM CONSISTS OF 4 PLAYERS
- MAXIMUM 3 TEAMS PER COLLEGE
- 10 MIN MATCH WITH 1 TIMEOUT FOR EACH TEAM
- FIRST TEAM TO GET 16 POINTS WIN
- STANDARD FIBA RULES WILL BE FOLLOWED
- ORGANISING COMMITTEE DECISION WILL BE FINAL





# BADMINTON MEN'S KNOCKOUT

REGISTRATION FEES - 400 .RS

INCHARGES

EANEST-7094209389

MITHESH-8056677650

VENUE

VENU GOPAL BADMINTON  
CLUB , NEAR OLD BUS STOP ,  
CHENGALPATTU

[CLICK HERE TO REGISTER](#)



# RULES

- TEAM EVENT
- SINGLES
- DOUBLES
- REVERSE SINGLES
- TILL QUARTERS FINALS - 30 POINTS 1 SETS
- SEMIFINALS AND FINALS - 21 POINTS 3 SETS
- NON MARKING SHOES ARE MANDATORY INSIDE THE COURT
- UMPIRES DECISIONS WILL BE FINAL
- PARTICIPANTS ARE REQUESTED TO ADHERE TO TIMINGS AND SCHEDULES
- ANY LATE ENTRY MAY LEAD TO DISQUALIFICATION OF THE TEAM





# BADMINTON WOMEN'S

## KNOCKOUT

REGISTRATION FEES - 400 .RS

## INCHARGES

HEMAVATHI V-7904677164

ISHWARYA-6379174822

HEMAVATHI S-9043094633

## VENUE

VENU GOPAL BADMINTON  
CLUB, NEAR OLD BUS STOP ,  
CHENGALPATTU

[CLICK HERE TO REGISTER](#)



# RULES

- TEAM EVENT
- SINGLES
- DOUBLES
- REVERSE SINGLES
- TILL QUATER FINALS - 30 POINTS 1 SET
- SEMI FINALS AND FINAL -21 POINTS 3 SET
- NON MARKING SHOES ARE MANDATORY INSIDE THE COURT
- UMPIRE'S DECISIONS WILL BE FINAL
- PARTICIPANTS ARE REQUESTED TO ADHERE TO TIMINGS AND SCHEDULE
- ANY LATE ENTRY MAY LEAD TO DISQUALIFICATION OF THE TEAM





# TABLE TENNIS WOMEN'S

## KNOCKOUT

REGISTRATION FEES

SINGLES-150 RS

DOUBLES-200 RS

MIXED DOUBLES-200 RS

## INCHARGES

CHAANDHINI -8668125873

HARSHADHA-8108284900

## VENUE

CHENGALPATTU MEDICAL

COLLEGE PHYSIOLOGY

YOGA HALL

[CLICK HERE TO REGISTER](#)



# RULES

- WOMEN'S SINGLES AND DOUBLES AND MIXED DOUBLES
- KNOCKOUT FORMAT
- EACH MATCH WILL CONSIST OF 5 SETS WITH 11 POINTS EACH SET
- ANY NUMBER OF PLAYERS FROM ONE COLLEGE CAN PARTICIPATE
- SAME PLAYER CAN PARTICIPATE IN BOTH SINGLES AND DOUBLES
- ALTERNATE SERVES EVERY TWO POINTS
- ALL INTERNATIONAL STANDARD RULES APPLY
- PLAYERS SHOULD BRING THEIR OWN RACKETS
- REFEREE'S DECISION WILL BE FINAL





# TABLE TENNIS MEN'S

## KNOCKOUT

REGISTRATION FEES

SINGLES-150 RS

DOUBLES-200RS

MIXED DOUBLES-200 RS

## INCHARGES

HARIHARAN-9345745011

KARTHIKEYAN NAVEEN-  
8712362026

## VENUE

CHENGALPATTU MEDICAL  
COLLEGE PHYSIOLOGY  
YOGA HALL

[CLICK HERE TO REGISTER](#)



# RULES

- MEN'S SINGLES AND DOUBLES AND MIXED DOUBLES

- KNOCKOUT FORMAT

- EACH MATCH WILL CONSIST OF 5 SETS WITH 11 POINTS EACH SET

- ANY NUMBER OF PLAYERS FROM ONE COLLEGE CAN PARTICIPATE

- SAME PLAYER CAN PARTICIPATE IN BOTH SINGLES AND DOUBLES

- ALTERNATE SERVES EVERY TWO POINTS

- ALL INTERNATIONAL STANDARD RULES APPLY

- PLAYERS SHOULD BRING THEIR OWN RACKETS

- REFEREE'S DECISION WILL BE FINAL





# CARROM MEN'S

## KNOCKOUT

REGISTRATION FEES

SINGLES - 150 RS

DOUBLES - 300 RS

SINGLES AND DOUBLES

-400 RS

## INCHARGES

ARVIND PRAABU-6379090228

GOWTHAM-8438542412

## VENUE

CHENGALPATTU MEDICAL  
COLLEGE

[CLICK HERE TO REGISTER](#)



# RULES

- DECISION OF THE CARROM CLUB COMMITTEE WILL BE FINAL
- BEST OF 3 WILL BE CONDUCTED
- NO ONE SHOULD STAND 2 FEET FROM THE BOARD OTHER THAN PLAYERS AND REFEREES
- PLAYERS SHOULD BRING THEIR OWN STRIKES
- THUMBING AND SCISSORING ALLOWED
- THE TYPE OF GAME CAN BE CHANGED TO POINT BASED GAME DEPENDING ON THE NUMBER OF ENTRIES
- REFEREE'S DECISION WILL BE FINAL





# CARRROM WOMEN'S

## KNOCKOUT

REGISTRATION FEES

SINGLES - 150 RS

DOUBLES - 300 RS

SINGLES AND DOUBLES  
-400 RS

## INCHARGES

SHAKTHI PREMA-9499918781

OVIYA-7358014733

## VENUE

CHENGALPATTU MEDICAL  
COLLEGE

[CLICK HERE TO REGISTER](#)



# RULES

- DECISIONS OF THE CARROM CLUB CHMC COMMITTEE WILL BE FINAL
- BEST OF 3 WILL BE CONDUCTED
- NO ONE SHOULD STAND 2 FEET FROM THE BOARD OTHER THAN PLAYERS AND REFEREES
- PLAYERS SHOULD BRING THEIR OWN STRIKES  
THUMBING AND SCISSORING ALLOWED
- THE TYPE OF GAME CAN BE CHANGED TO POINT BASED GAME DEPENDING ON THE NUMBER OF ENTRIES.
- REFEREE'S DECISION WILL BE FINAL





# CHESS MEN AND WOMEN'S LEAGUE

REGISTRATION FEES - 150 RS

INCHARGES

SAMSON-9994841516

KAMALESH-9843248759

VENUE

DEPARTMENT OF FORENSIC  
MEDICINE ,  
CHENGALPATTU MEDICAL  
COLLEGE

[CLICK HERE TO REGISTER](#)



# RULES

- GAME TIME - 10 MINS EACH
- 1ST ILLEGAL ALLOWED AND 2 ND ILLEGAL RESULT IN LOSS OF GAME
- SWISS SYSTEM OF PAIRING
- TIEBREAKER BASED ON HEAD TO HEAD FOLLOWED BY BUCHHOLS
- ALL STANDARD SWISS RULES APPLY
- DECISION OF REFEREE WILL BE FINAL





# TRACK AND FIELD MEN'S

## KNOCKOUT

### REGISTRATION FEES

ONE INDIVIDUAL EVENT-150 RS

TWO INDIVIDUAL EVENT -225 RS

THREE INDIVIDUAL EVENT-275 RS

FOUR INDIVIDUAL EVENT-300 RS

RELAY-600 PER TEAM

FOR ONSPOT REGISTRATION ADDITIONAL RS .25

WILL BE COLLECTED

## INCHARGES

MAGESH-868009099

VINODH-9791148871

## VENUE

CRICKET GROUND,  
CHENGALPATTU MEDICAL COLLEGE

[CLICK HERE TO REGISTER](#)



# RULES

- TRACK EVENTS

- 100 METER
- 200 METER
- 400 METER

- 4x100 METERS RELAY

- FIELD EVENT SHOTPUT

- DISCUSS THROW





# TRACK AND FIELD WOMEN'S

## REGISTRATION FEES

ONE INDIVIDUAL EVENT-150 RS

TWO INDIVIDUAL EVENT -225 RS

THREE INDIVIDUAL EVENT-275 RS

FOUR INDIVIDUAL EVENT-300 RS

RELAY-600 PER TEAM

FOR ONSPOT REGISTRATION ADDITIONAL

RS .25 WILL BE COLLECTED

## INCHARGES

PRIYANKA -9345445298

DIVYA -9962304214

SUMANA - 8977366776

## VENUE

CRICKET GROUND ,  
CHENGALPATTU  
MEDICAL COLLEGE

[CLICK HERE TO REGISTER](#)



# RULES

- TRACK EVENTS

100 METER

200 METER

400 METER

- 4'100 METER RELAY

- FIELD EVENT SHOTPUT

- DISCUSS THROW





FOR ENQUIRIES  
SPORT'S SECRETARIES

**PRAVEEN RAJ-9384345495**  
**AISWARYA-7200162169**

OUR SOCIAL MEDIA PARTNER



**CHEMSPORTS\_2K25**





# REGISTRATION DESK

CONTACT

**KHAN-6381210910**

**SRINIVAS J-6383018043**

**ANANTHAVATHANI-**

**9444824366**

# ACCOMMODATION

CONTACT

**SRI PRIYAN-9080477973**

**ELAMATHY-8925146322**



**CHEMSPORTS\_2K25**